



Message in a Bottle



Fall 2021 Scholarships

Osher Scholarship – Deadline is 10/15/21.

NextEra Energy Scholarship – Ongoing until funds are exhausted. For STEM and Vocational Technology (CTE) majors. A full list of eligible majors is available on the first page of the application.

Should you like someone to look over your application essay before your submit you application, you can send a draft to either Bianca Rodriguez or Stephanie Slagan to review them.

Bianca: bianca.rodriguez@paloverde.edu

Stephanie: stephanie.slagan@paloverde.edu

Associated Student Government Officers



Jose Rascon

Ariel Reyes

Olivia Dagnino

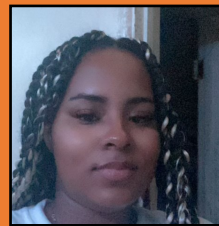
Waylon Anderson

President

Vice President

Secretary

Business Manager



Jade Torres

Marie Smith

Nya Jones

Staci Lee

Student Trustee

Historian

Comm. Of Publicity

Advisor

Address: One College Drive Blythe, CA 92225

Phone: 760-921-5519 11:00am

E-mail: staci.lee@paloverde.edu

Meetings held every Tuesday in CS133. All students welcome.

Halloween Lockdown - October 28th
Please Join us @ 9am-2pm in the Pirate's Cove
Games, Prizes, Food, and Spooky Fun!

Warrants are available for purchase NOW in the ASG office during

Office Hours

5 minutes: \$1.00

10 minutes: \$2.00

30 minutes \$5.00

Remember to wear your costume!

Dates to Remember

Oct. 7th-Last day to petition to graduate

Oct. 15th-Pirate's Chest

Oct. 22nd-Institute Day, No Classes !!!!

Oct. 28th-Halloween Lockdown

Oct. 31st-Halloween

Oct. 15th-Osher scholarship deadline

Nov. 1st-First Home B-ball Game

Nov. 11th- Veterans Day Campus Closed

Pumpkin Contest

ASG is holding a pumpkin contest between the College Departments/classes here on campus. If your department/class would like to participate please

E-mail (Staci.Lee@paloverde.edu) by October 7, 2021 (a \$5.00 (per pumpkin)entry fee will be due upon picking up your pumpkin and guidelines will be handed out.)

If you responded via E-mail to participate you will be able to pick up your pumpkin in the Student Activities Center on October 14 and it will need to be returned to the

Student Activities Center by October 21.

Pumpkins will be judged by the ASG Officers and a prize will be awarded on October 28th at the ASG Lockdown

ASG Office Hours

Monday: 9:30AM-5:00PM

Tuesday: 10:30AM-4:00PM

Wed. & Thurs.: 9:30AM-4:00PM

Friday: CLOSED

*Subject to change

This Month's Events

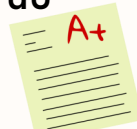
LGBTQ+ History Month

LGBT History Month is an annual month-long observance of lesbian, gay, bisexual and transgender history, and the history of the gay rights and related civil rights movements. It was founded in 1994 by Missouri high-school history teacher Rodney Wilson.



Teacher Day

Make sure to thank your teachers for the hard work they do on October 5th



ASG Weekly Activities

Mon.- Movie w/Popcorn
Tues- Game Day
Wed.- Study Day w/Coffee
Thurs.- College Shirt Day
All Activities listed are Free with an ASG Card. Remember you can purchase your ASG card in the business office \$10.00 for the semester \$18.00 for the year.

Breast Cancer Awareness Month

This year, an estimated 281,550 women in the United States will be diagnosed with invasive breast cancer, and 49,290 women will be diagnosed with non-invasive breast cancer. Breast Cancer Awareness Month helps spread information on breast cancer and how it affects people's lives.



Interested in joining the Army

Contact U.S. Army Recruiter

Kaiden Ruddy

Office: (760) 773-3235

Cell: (760) 702-9924



World Mental Health Day

October 10th is World Mental Health Day,

make sure you take some time to do something good for yourself. Get cozy and read a book, take a nice walk or visit with family.

If you or a loved one needs mental health support please contact us for a list of recourses.

Meet Our Womens Basketball Team



#1
Ollie
Martin



#3
Olivia
Dagnino



#4
Natalie
Dagnino



#10
Emilia
Noriega



#12
Leilani
Webster



2021-2022



#20
Katherine
Felix



#21
Kimberly
LoneBear



#24
Breanna
Willis



#34
Kazymah
Vasquez



Team
Manager
Nya
Jones